

Release Notes for Sage Payroll & HRMS 2015

Content

Version 9.9.1.9

Release date: 23rd September 2015

Issues that have been addressed

Case ID	Brief Description
187-122106	Change company name error
296-124098	Mobile License error
240-126250	APS format for CIMB Socso - 92

Version 9.9.1.8

Release date: 17th September 2015

Bank format enhancement

Maybank EPay APS format 35:

2nd Half Payroll - Thru Bank Via Diskette

NOT GENERATE

Bank

Category:

Name: STESEN MINYAK DAN SERVIS REZKI

Code:

Branch Code:

Originator (Company)

Account No.: 518027000144

Name: STESEN MINYAK DAN SERVIS REZKI


ID: 61618

APS - Auto Pay System

APS Number: 35

APS File Name: MBBEPAY.txt

APS Bank: Maybank Epay



Save Generate Cancel

User need to import the output from Sage Payroll into Maybank Autocredit System, whereby the output file from Maybank Autocredit System will be uploaded to Maybank M2U Biz portal.

*User must have a valid Maybank M2U Biz Account.

Steps by Steps: <http://knowledge.sage.my/index.php?/article/AA-08031>

Video: <https://www.youtube.com/watch?v=rZAo8vR8F-o&feature=youtu.be>

Version 9.9.1.7

Release date: 28th August 2015

Bank format enhancement

Maybank HRPay 6.4.3

APS No.	Payment type
50	Salary
70	EPF
71	Socso*
77	Tax

*Key in your new 12 digits Employer code at Organization ID (APS) field as below.

CIMB BizChannel

APS No.	Payment type
7	Salary
64	EPF
92	Socso (For 12 digits Employer code)

Version 9.9.1.6

Release date: 6th August 2015

Bank format enhancement

APS no. 73 - Alliance Socso file format for 12 digits Employer code.

Please rename file name to "SCEF_XXXXXX.txt" (where by XXXXXX are variable) before submitting to bank.

Version 9.9.1.5

Release date: 27th February 2015

Landing page

- After logout from landing page, page will be returning to login screen instead of exiting system.

- b) List view of company

CDAC, Eurasian Association, SINDA (For Singapore Edition only)

- a) CDAC, ECF and SINDA are calculated using gross pay, including Basic rate, Allowances, Commission, Bonus, OT Pay, etc.
- b) In the case of more than one payment (1st half > 2nd half > Bonus > Commission) for the month, the deduction amount always use total deduction minus deduction already paid out in the previous payment.

e.g. 1st half > 2nd half > Bonus > Commission

CDAC, ECF, SINDA of 2nd half = Total contribution (1st + 2nd half) – contribution already paid out in 1st half

CDAC, ECF, SINDA of Bonus = Total contribution (1st + 2nd half + Bonus) – contribution already paid out in 1st and 2nd half

Issues that have been addressed

Case ID	Brief Description
-	"Access denied UBShRMS\company.dbf" when open landing page.
-	Preview PCB Constant Value, Description: 24% change to 24.5 %
-	Child Relief Point in Personnel File Maintenance, child relief point caption message.

Known Issues

For Singapore edition, deduction for Mendaki and Mosque fund will be remained as separate calculation when there is more than one payment for the month.

The calculation method applied in CDAC, ECF and SINDA will be enhanced to Mendaki and Mosque fund in future.

Version 9.9.1.4

Release date: 3rd February 2015

Issues that have been addressed

Case ID	Brief Description
-	Run command fail due to Long folder name issue
-	Default year for newly created company was not set to "2015"
-	Exit button on Main form did not exit properly
-	PCB 2(11) issue "SQL: Group By clause is missing or invalid"

-	IR8A file format (Singapore) – unable to generate the IR8A.txt text file
---	---

Disclaimer:

Sage Payroll 2015 (version 9.9.1.3) is tested on Windows 7 and Windows 8.

Version 9.9.1.3

Release date: 26th January 2015

PCB 2015

The PCB for Returning Expert Program and Knowledge Worker is now updated to the latest formula.

Manage user

In version 9.9.1.0 – 9.9.1.2 , the user management screen was disabled for maintenance purpose. Now this function is made available.

CDAC, Eurasian Association, SINDA

Individual monthly contribution rate to CDAC Fund, ECF and SINDA fund has been updated.

Issues that have been addressed

Case ID	Brief Description
-	“File does not exist” is shown when print Appendix 8A
-	Error message shown when save new employee via simplified interface
-	\ in the data folder path
-	“Incorrect password” message shown when login even though using existing login
-	“Invalid path or file name” message shown
-	“Data type mismatch” message shown upon login
-	“C:\subspayex\companymerge.dbf does not exist” message is shown
-	“WDRPT is not found” message is shown
-	EA form printing alignment issue
-	Error messages shown when upgrade from version 9.8.0.6

Disclaimer:

Sage Payroll 2015 (version 9.9.1.3) is tested on Windows 7 and Windows 8. It is cater for upgrade from version 9.8 onwards only.

Version 9.9.1.2 *Release date: 20th January 2015*

Issues that have been addressed

Case ID	Brief Description
-	Malaysia Tax Relief Table for 2015 – Capping for TR0003 and TR0006

Version 9.9.1.1 *Release date: 16th January 2015*

Issues that have been addressed

Case ID	Brief Description
-	Existing companies not shown after login
-	“Invalid username or password” message shown after select to run Payroll or HRMS
-	Unable to view previous year amount via historical listing
-	Unable to print customized payslip, system is always referring to the standard payslip in Reports folder.
-	Message “File ‘orgcompanyi.dbf’ does not exist” is shown after upgrade

Version 9.9.1.0 *Release date: 14th January 2015*

Sage Payroll 2015 Installation

Sage Payroll 2015 installation includes installation of Sage Payroll 2015 and Sage HRMS. System will auto create data folder in Sage HRMS for every existing company found in Sage Payroll.

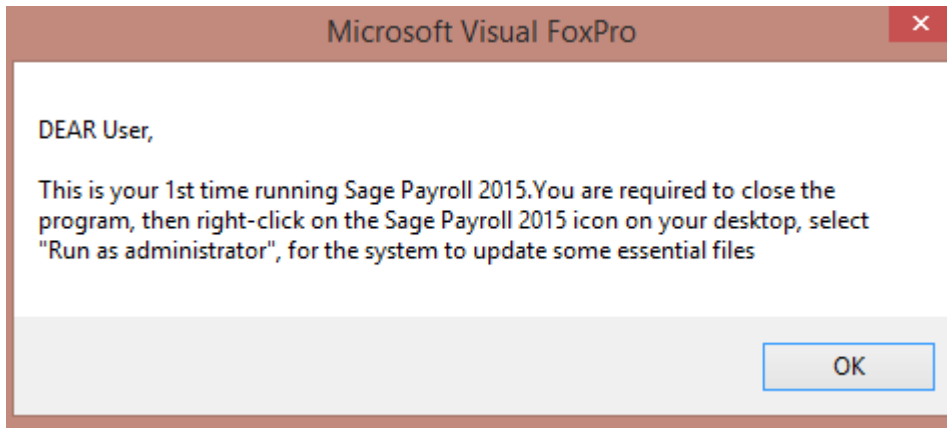
New Landing Page


After login to the system, you will come to new landing page, you can :

- Access the company
- Create New Company
- Edit Company Logo, directory folder
- Delete Company
- Manage License
- Manage User in Control Panel
- Select company to enter Payroll or HRMS module.

Important notes :

1. For Windows 8, sometimes it will block the system from updating the company list causing no company listed in the landing page. So, when 1st time login, if system is unable to update the company table, system will prompt the below message. You must run the steps mentioned in this message for 1 time.



2. If previously you have both Payroll and HRMS, but you did not link the data folders, by default, system will only show all companies in your Payroll system, you will need to manually link the data folders by clicking the  icon below the company logo.

New Simplified Interface (For Malaysia edition only)

In Sage Payroll 2015, you will have to option to switch to the new simplified interface with :

- Guided processing flow for 1st half pay, 2nd half pay, Commission and Bonus
- End to end process from add pay, process pay, print payment reports to month end process in a centralized menu
- Reprocess pay function without deleting previous pay
- View calculation breakdown for EPF, SOCSO and PCB
- Employee listing with alphabetical, gender & status grouping

PCB 2015

- a) Income Tax for Resident Individual
 - Individual income tax rate will be reduced by 1 to 3 percentage points.
 - Individual income tax will be restructured whereby the chargeable income subject to the maximum rate will be increase from exceeding RM100,000 to exceeding RM400,000.
 - The maximum tax rate for year 2014 at 26% will be reduced to 24%, 24.5% and 25%.
- b) Income Tax for Non - Resident Individual
 - Non – resident individuals' income tax rate would be reduced by 1% from 26% to 25%.
- c) Increase in Deduction for Medical Expenses Incurred For Serious Diseases
 - The deduction for medical expenses incurred for serious disease be increased to RM6,000.

- d) Increase in Deduction For Disable Child
 - The deduction be increased to RM6,000.
- e) Increase in Deduction For Purchase Of Basic Supporting Equipment For The Disabled
 - The deduction be increased to RM6,000.

Reference:

<http://www.hasil.gov.my/goindex.php?kump=5&skum=3&posi=1&unit=5100&sequ=6>

Important notes :

Due to the latest MTD calculation using computerized calculation for 2015 is only announced on 06/01/2015, thus, the PCB for Returning Expert Program and Knowledge Worker will be remained as 15% as for now.

The formula will be updated accordingly in the next online update.

CPF Contribution Rate Change (For Singapore)

CPF contribution rates are increased from 1 January 2015:

- a) Increase in Employer's CPF Contribution Rates
 - For employees aged 50 years and below or above 65 years, the employer contribution rates are increased by 1 percentage point.
 - For employees aged above 50 to 55 years or above 55 to 65 years, the employer contribution rates are increased by 2 and 1.5 percentage points respectively.
- b) Increase in Employee's CPF Contribution Rates
 - For employees aged above 50 to 55 years, the employee contribution rates are increased by 0.5 percentage point. For those earning wages of >\$500 to <\$750, the contribution rates continue to be phased-in. The increase in CPF contribution is allocated to the Ordinary Account.

The increase in the CPF contribution rates does not apply to graduated employer and employee rates for first or second year Singapore Permanent Residents (SPR) and their employers.

From 2015, the CPF Annual Limit is increased to \$31,450. The Ordinary Wage Ceiling remains unchanged.

Reference:

http://mycpf.cpf.gov.sg/Employers/Gen-Info/cpf-Contr/CPF_Contribution_Rate_Booklets.htm

***** END *****